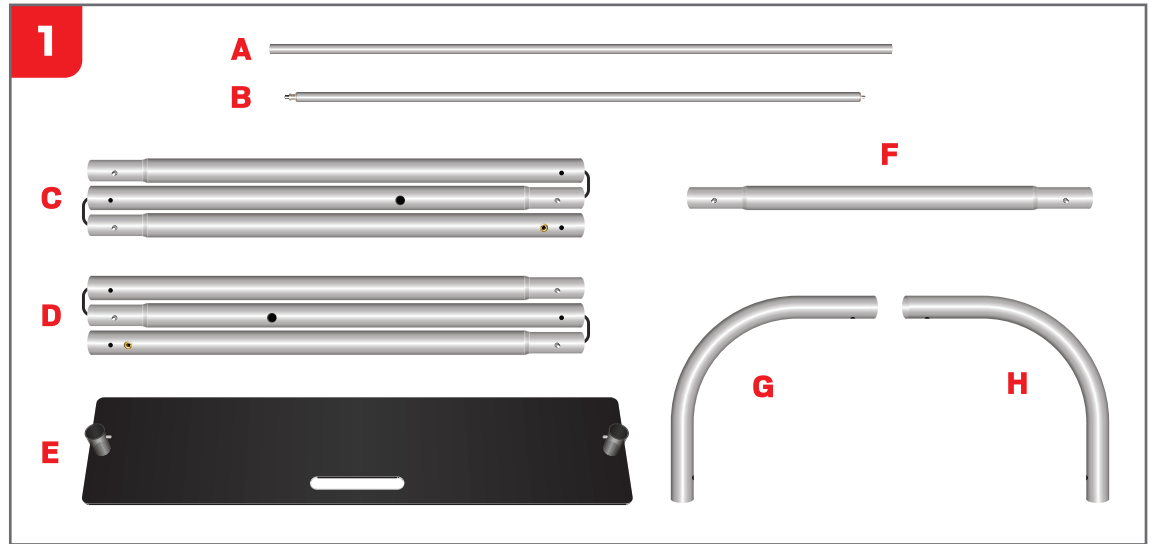
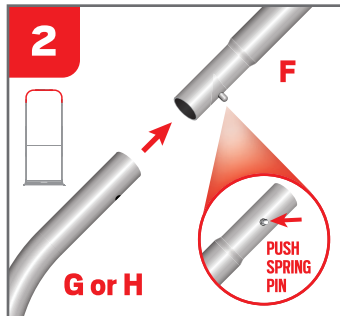


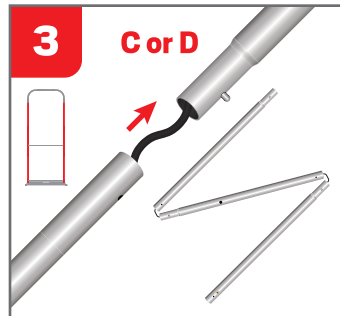
TENSION FABRIC STAND SET-UP INSTRUCTIONS



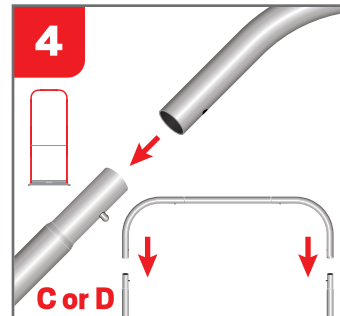
REMOVE AND IDENTIFY THE EIGHT (8) PIECES OF HARDWARE IN THE TRAVEL BAG.



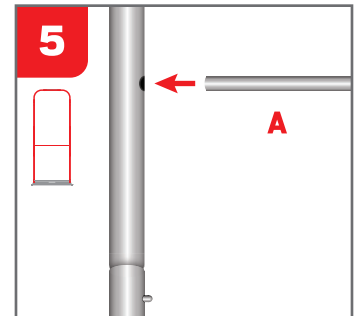
ATTACH CURVED BARS (G AND H) TO TOP CENTER BAR (F) BY PRESSING SPRING PIN DOWN AND SLIDING ON TO LOCK.



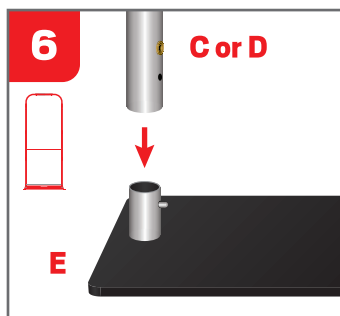
ASSEMBLE THE VERTICAL POLES (C AND D) BY ATTACHING THE THREE SEGMENTS TETHERED BY A BUNGEE CORD.



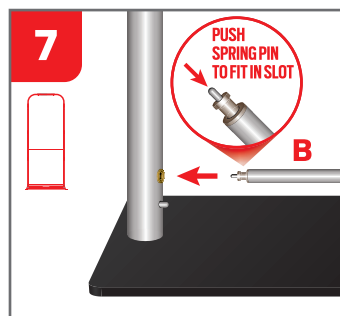
ATTACH THE VERTICAL POLES (C AND D) TO THE ASSEMBLED TOP SECTION FROM STEP 2.



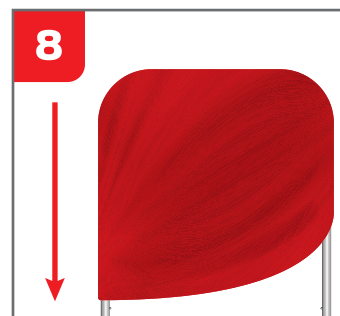
SLIDE THE MIDDLE HORIZONTAL BAR (A) INTO THE LARGE HOLES IN THE CENTER SECTIONS OF THE VERTICAL POLES.



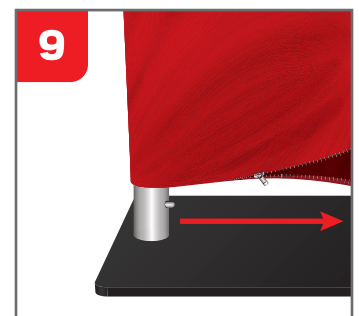
ATTACH THE ASSEMBLED TENSION BANNER STAND FRAME TO THE BASE (E).



CONNECT THE LOWER HORIZONTAL BAR (B) INTO THE BRONZE HOLES NEAR THE BASE.



PULL THE TENSION FABRIC BANNER OVER THE FRAME LIKE A PILLOW CASE.



ZIP THE TENSION FABRIC BANNER AT THE BASE OF THE FRAME.