

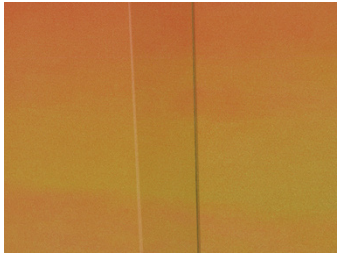
## PRE-WRAP CHECKLIST:

A **clean vehicle** will create the best canvas for your vehicle application and ensure maximum longevity of your wrap. Please review and complete our Pre-Wrap Checklist before bringing your vehicle in for a wrap application.

- ☐ **1. Remove Grease, Road Grime, and Insects.**  
Using a degreasing agent such as Citrus Cleaner, remove any and all road grease, grime, tar, and insects from the vehicle. This will ensure a smooth surface for application.
- ☐ **2. Remove Debris in All Seams.**  
With a soft bristled brush and terry cloth, remove all debris such as pine needles, twigs, and contaminants that have accumulated in the door and hood seams. This will ensure that vinyl wrapped around doors and hoods adhere to a clean surface.
- ☐ **3. Remove Adhesive from Previous Vinyl Applications.**  
If your vehicle previously had vinyl graphics applied to it, there may be residual adhesive on the vehicle even after the vinyl graphics were removed. Using a degreasing agent, remove any old adhesive. Complete removal may take several degreasing and wiping applications to attack stubborn, dried adhesive.
- ☐ **4. Refrain from Waxing Vehicle.**  
Do not apply wax to your vehicle's exterior surfaces for several weeks prior to your vehicle wrap installation. The wax residue can interfere with the adhesive bond between the vinyl film and vehicle surface, leaving the wrap vulnerable to lifting and bubbles.
- ☐ **5. Run Vehicle Through a Carwash.**  
Finally, just prior to having your wrap installed, run the vehicle through a car wash to ensure all surfaces are free of dirt and grime. Make sure the cleaning cycle is just using soap and water, no wax.

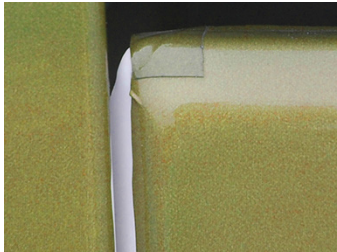
I have read and understand the application considerations and Pre-Wrap Checklist. I agree that if my vehicle is not clean and properly prepared for a wrap installation, Xpress Copy and Graphics reserves the right to incur additional charges of \$80 per hour to compensate for cleaning time and supplies. I understand that the longevity of my wrap and its appearance over time will depend on a number of factors including, but not limited to, weather & local climate, road conditions, daily use, and overall initial condition of the vehicle's surfaces before wrap installation.

**Client Signature:** \_\_\_\_\_



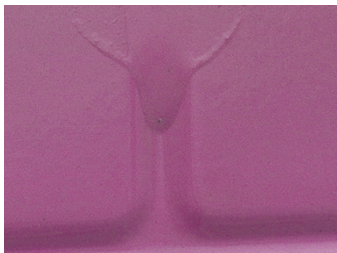
## OVERLAPPING SEAMS:

Seams occur when one panel is placed over the initial panel. 1/4"-1" seams are common place. Depicted is an acceptable seam.



## PATCHING:

A common practice during application, sometimes a piece needs to be reprinted and patched back in. If a change is required after the proofing phase, Xpress will determine if a patch is needed to complete the wrap.



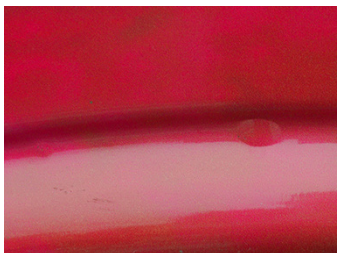
## DEEP RECESSES & CUT LINES:

Deep recesses in body panels may create "bridging" in the vinyl, which can cause lifting or bubbles. This occurs when the vinyl material exceeds its pliability. In these cases Xpress applies primer per industry standards, but cutting may also be necessary to release stress in deep creases as well as finishing with an edge sealant.



## LIFTING:

Vehicle contours, compound curves, and vinyl stretching can cause non-adhering to textured plastic parts. These areas are not warranted for repair. However, lifting that occurs on main body panels and other areas where it should not appear will be repaired by Xpress if it's brought to our attention within 30 days of application.



## WRINKLES & BUBBLES:

Vehicle contours, compound curves, and vinyl stretching can cause wrinkling where excess material gathers. Xpress will do its best to minimize this during the application process. Bubbles can be heated and pushed down flat.



## ALIGNING TYPE:

Vehicle contours and vinyl stretching can cause type to be misaligned or crooked during the application process. One option Xpress provides is cutting vinyl lettering and applying it over the wrap. This option incurs additional cost in material and time.